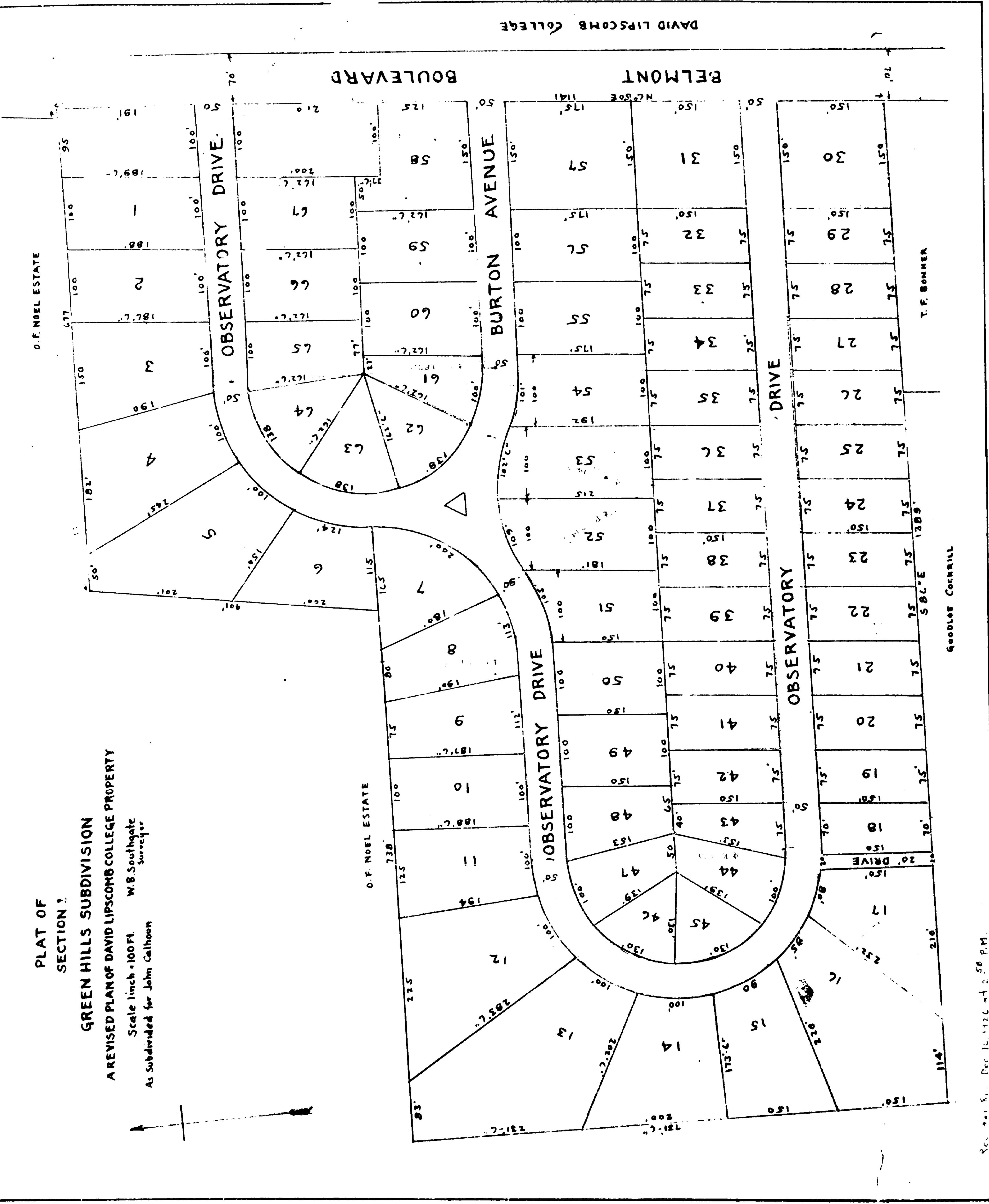


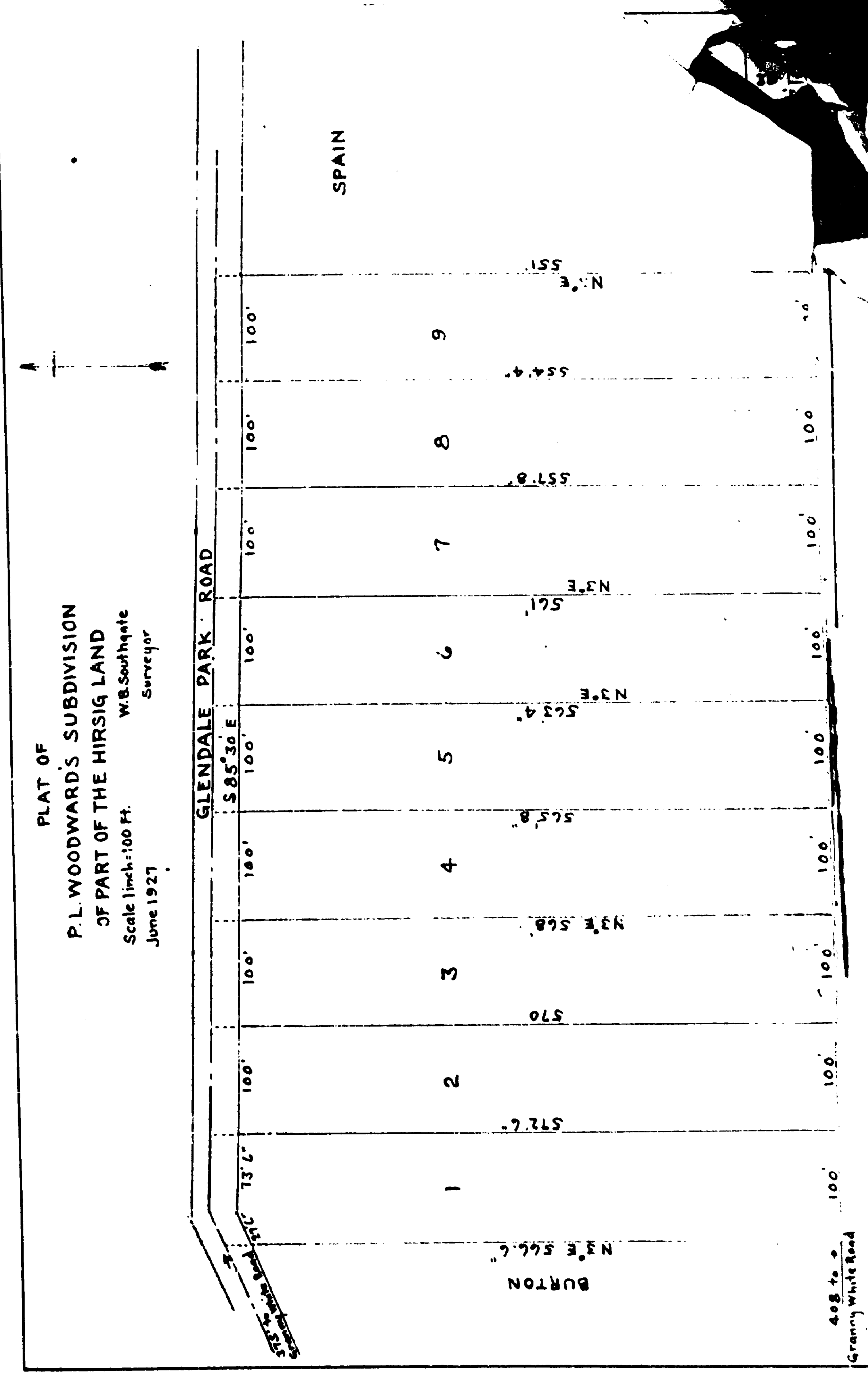
228

PLAT OF
SECTION 1
GREEN HILLS SUBDIVISION
A REVISED PLAN OF DAVID LIPSCOMB COLLEGE PROPERTY
Scale 1 inch = 100 FT. W.B. Southgate
Surrector
As Subdivided for John Calhoun



Rec. 441 S. Per 10, 11, 12, 13, 14, 15, 16, 17, 18, 19, 20, 21, 22, 23, 24, 25, 26, 27, 28, 29, 30, 31, 32, 33, 34, 35, 36, 37, 38, 39, 40, 41, 42, 43, 44, 45, 46, 47, 48, 49, 50, 51, 52, 53, 54, 55, 56, 57, 58, 59, 60, 61

PLAT OF
P.L. WOODWARD'S SUBDIVISION
OF PART OF THE HIRSIG LAND
Scale 1 inch = 100 FT. W.B. Southgate
Surrector
June 1927



498 to 2
Granny White Road
Reg. for Rec. June 15, 1927 at 9:51 A.M.