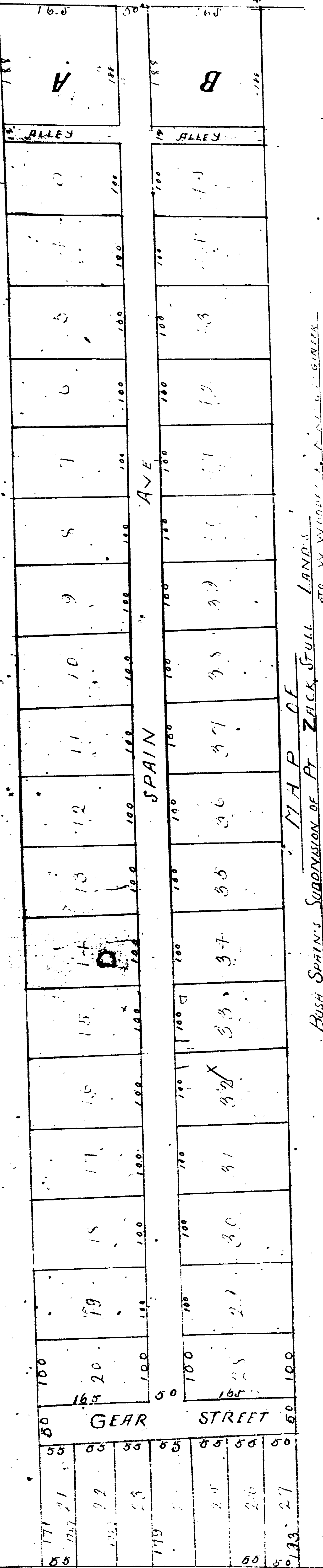


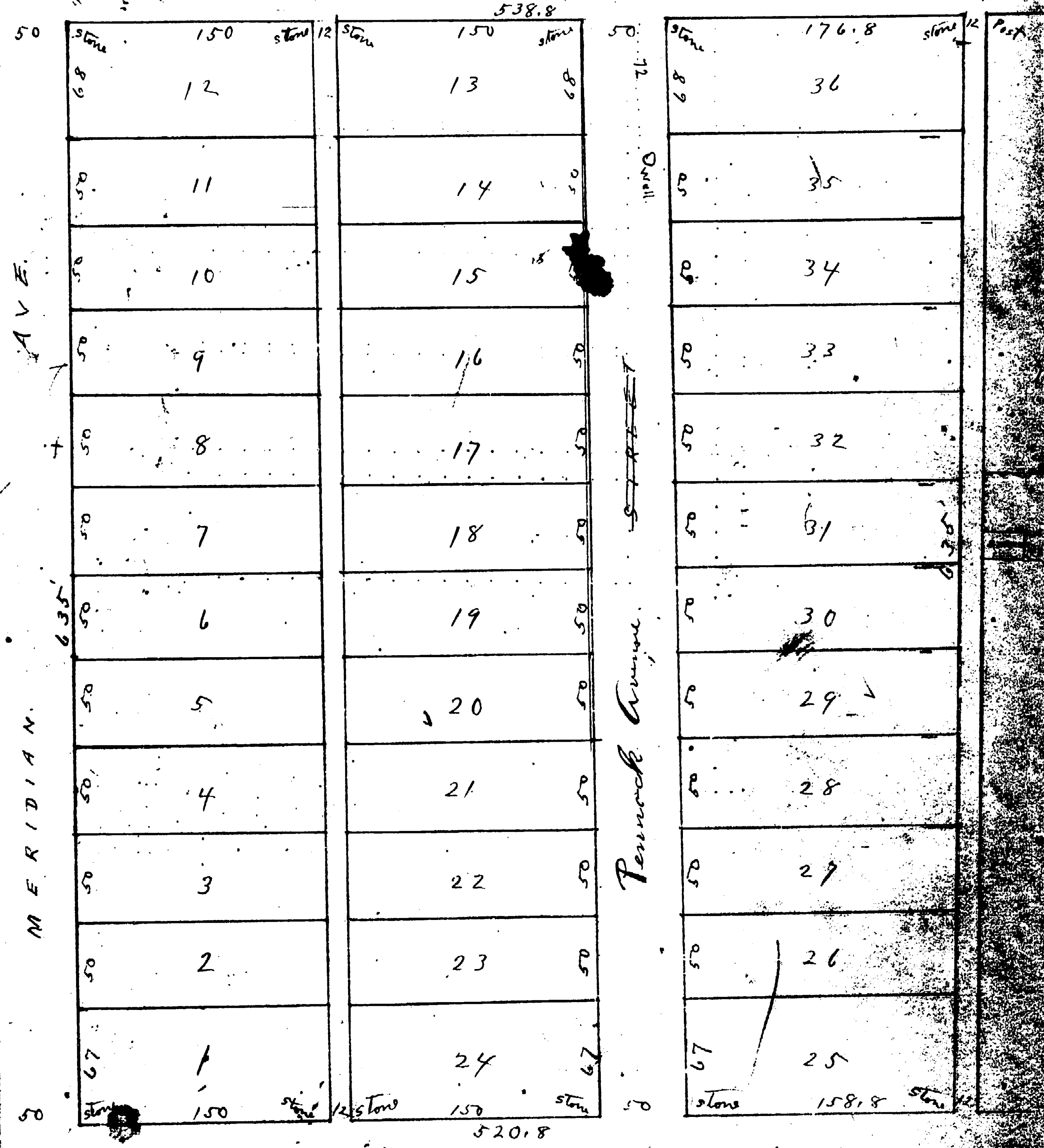
GALLATIN ROAD



MAP OF
 BOSE SPAIN'S SUBDIVISION OF PT ZACKS FULL LANDS
 REC'D. MAR. 9. 1904. 11:30 A.M.

129

(L I C O N) DOUGLAS HVE



(S C O T) RICHARDSON STR AVE

The above is a true plan of the Crutchers
 subdivision of a part of the Lucy H. Lindsay Property
 Abstract Book 102, p. 626.
 Scale 60 Ft. = One inch
 W. W. Southgate
 March - 1904

Filed for record May 2 - 1904
 at 9:15 A.M.

P.R.